

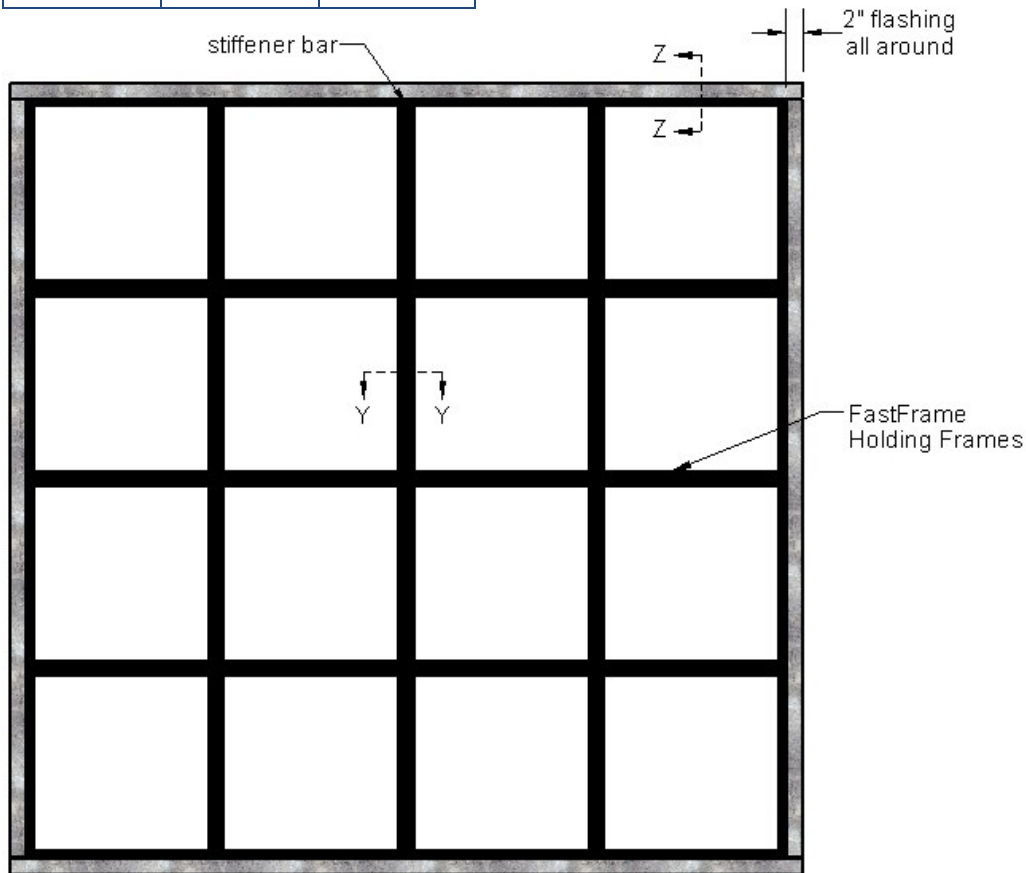
FastFrame™

Built-Up Bank Installation Instructions

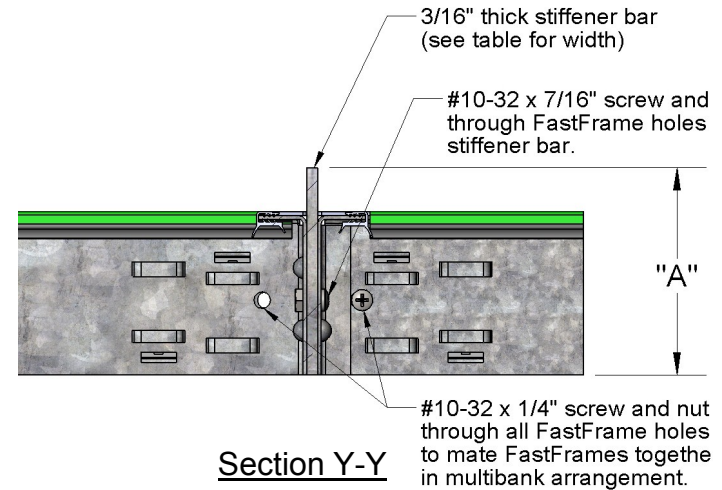
Number of Frames High	"A" (inches)	Stiffener Bar Thickness
4	3.50	3/16"
5	4.00	3/16"
6	4.50	3/16"
7	5.00	3/16"
8	5.50	3/16"

General Notes:

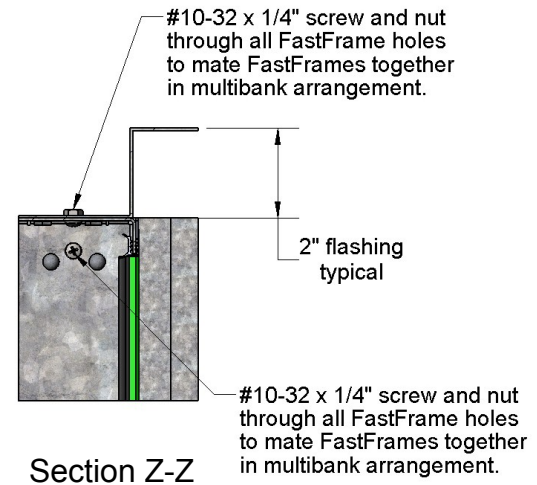
1. Stiffener bars, flashing, caulking and mounting hardware are supplied by others. Installer is to be fully responsible for the sealing integrity of built-up bank.
2. For proper sealing and strength, install fasteners in all mounting holes provided in the FastFrame. Caulking is required between all FastFrame joints to prevent air bypass, including FastFrame connections, flashing, stiffener bars and flashing to duct plenum.
3. Stiffener bars should be added between every other column of FastFrames on banks 4 high x 3 wide and larger. Stiffener bar widths to be as shown in Stiffener Bar Size Table of this drawing.



4 high x 4 wide built-up bank configuration shown



Section Y-Y



Section Z-Z